

Steroidogenic Factor-1 Interacts with cAMP Response Element-Binding Protein to Mediate cAMP Stimulation of *CYP1B1* via a Far Upstream Enhancer

Wenchao Zheng and Colin R. Jefcoate

Department of Pharmacology, Medical Science Center, University of Wisconsin, Madison, Wisconsin

Received July 27, 2004; accepted October 28, 2004

ABSTRACT

CYP1B1 activates polycyclic aromatic hydrocarbon carcinogens in cAMP-regulated tissues such as the adrenal, ovary, and testis. A 27-fold cAMP stimulation of the *CYP1B1*-luciferase reporter in Y-1 adrenal cells depends entirely on a far upstream enhancer region (FUER; –5298 to –5110). Cooperative participation of multiple steroidogenic factor 1 (SF-1) elements with the downstream cAMP response element (CRE) in FUER is essential for both basal and cAMP-stimulated activities of FUER. Basal and induced activities were similarly lowered by DAX-1, an SF-1 suppressor, and raised by steroid receptor coactivator 1, an SF-1 coactivator. cAMP response element-binding protein (CREB)-binding protein (CBP) that interacts preferentially with the phosphorylated-CREB increased the cAMP-induced FUER. 10T1/2 cells and human embryonic kidney (HEK)293 cells do not express SF-1. Introduction of exogenous SF-1 generated cAMP stimulation of the FUER in 10T1/2 fibroblasts. The same transfection only increased basal activity

of FUER in HEK293 cells, despite presence of active CREB in cells. HEK293 cells therefore remain deficient in additional factor(s) critical to the cAMP stimulation of *CYP1B1*. Mutations of the protein kinase A (PKA) and the mitogen-activated protein kinase phosphorylation sites (Ser-430 and Ser-203) on SF-1 had no effect on the SF-1-dependent FUER stimulation in Y-1 and 10T1/2 cells. This contrasts with loss of activity with mutation of CREB at PKA phosphorylation site (Ser-133). SF-1 phosphorylation at these sites is therefore not essential for the cAMP stimulation and the cooperation with CREB. cAMP-enhanced activation protein 1 (AP-1) and stimulatory protein 1 (Sp1) complexes in the proximal promoter region contributed substantially to both basal and cAMP-stimulated FUER activity. Chromatin immunoprecipitation from primary rat adrenal cells demonstrated cAMP stimulation of histone acetylation proximal to, respectively, the FUER and AP-1 sites of *CYP1B1*.

CYP1B1 was first identified and purified from mouse embryonic fibroblasts (Pottenger and Jefcoate, 1990) and from rat adrenals (Otto et al., 1991). The *CYP1B1* gene is unusual among vertebrate P450 cytochromes in exhibiting both cAMP and aryl hydrocarbon receptor (AhR)-regulated expression. AhR activation induces *CYP1B1* in mouse embryonic fibroblasts and many extrahepatic tissues (Meyer et al., 2000). *CYP1B1* is expressed constitutively in steroidogenic tissues like the adrenal, ovary, and testes where AhR levels are low.

This work was supported by National Institutes of Health grant CA16265 and Environmental Health Sciences Center for Developmental and Molecular Toxicology, National Institute of Environmental Health Sciences grant ES09090.

Article, publication date, and citation information can be found at <http://molpharm.aspetjournals.org>.
doi:10.1124/mol.104.005504.

ABBREVIATIONS: AhR, aryl hydrocarbon receptor; SF-1, steroidogenic factor 1; CREB, cAMP response element-binding protein; PKA, protein kinase A; FUER, far upstream enhance region; CRE, cAMP response element; StAR, steroidogenic acute regulatory; SRC-1, steroid receptor coactivator 1; P/CAF, p300/CREB-binding protein-associated factor; PPR, proximal promoter region; AP-1, activation protein 1; Sp1, stimulatory protein 1; 8-Br-cAMP, 8-bromo-cAMP; HEK, human embryonic kidney; CBP, cAMP response element-binding protein binding protein; CMV, cytomegalovirus; PCR, polymerase chain reaction; EMSA, electrophoretic mobility shift assay; ChIP, chromatin immunoprecipitation; kb, kilobase; MAPK, mitogen-activated protein kinase; HAT, histone acetyltransferase.

including the orphan nuclear receptor steroidogenic factor 1 (SF-1) (Jacob and Lund, 1998) and CREB (Doi et al., 2002), a nuclear regulator that is directly phosphorylated by protein kinase A (PKA). In our previous work, we have identified a 189-base pair far upstream enhancer region (FUER; -5298 to -5110) of *CYP11B1*, which mediates cAMP-stimulation of *CYP11B1* reporters in adrenal Y-1 cells and testis MA-10 cells as well as in rat adrenal cells (Zheng et al., 2003). cAMP induction by FUER is totally dependent on the cAMP response element (CRE) located at the 3' end (Zheng et al., 2003). We have also characterized a 230-base pair enhancer region (-1026 to -797) that regulates 2,3,7,8-tetrachlorodibenzo-*p*-dioxin induction through the AhR (Zhang et al., 1998). These two regions function essentially independently. Dissection of the FUER shows that the 5' half is also essential for activity, suggesting cooperation of upstream complexes with the 3' CREB complex. The sequence of FUER contains four SF-1 binding elements, including one adjacent to the critical CRE. In this article, we show that SF-1 is an essential partner of CREB in the FUER.

SF-1 is a member of the nuclear receptor superfamily that contains a characteristic zinc finger DNA binding domain and a putative ligand binding/dimerization domain but has no known ligand activator. Potential PKA phosphorylation sites are present in SF-1, and in vitro studies have directly demonstrated a PKA-dependent phosphorylation of SF-1 (Zhang and Mellon, 1996; Carlone and Richards, 1997a; Jacob and Lund, 1998). Phosphorylation of SF-1 via the mitogen-activated protein kinase pathway does contribute to transcriptional activity (Hammer et al., 1999). SF-1 is expressed in the adrenal cortex, testis, ovary, pituitary gonadotrope cells, and hypothalamus (Lala et al., 1992; Honda et al., 1993) and plays an essential role in the development of these tissues (Lala et al., 1992; Honda et al., 1993; Luo et al., 1994). SF-1 functions as a transcriptional regulator for a variety of cAMP-dependent target genes, including aromatase (Fitzpatrick and Richards, 1993), cholesterol side chain cleavage enzyme, steroidogenic acute regulatory (StAR) protein, and luteinizing hormone β . DAX-1 is also regulated by SF-1 (Yu et al., 1998) and functions as a repressor of SF-1 activity. In several genes such as StAR and aromatase, SF-1 functions cooperatively with CREB.

Post-translational modifications of histones, such as acetylation/deacetylation, methylation, or phosphorylation, provide the primary mechanism for controlling the access of genes in native chromatin to nuclear regulatory factor (Struhl, 1998). Coactivators, such as steroid receptor coactivator 1 (SRC-1), bind to AF2 recognition sequences that link to the putative ligand binding domains of the nuclear receptor superfamily, including SF-1 (Ito et al., 1998). CBP/P300 (Bannister and Kouzarides, 1996; Ogryzko et al., 1996) binds to a wide range of nuclear factors, including SF-1, AhR, and CREB (Chrivia et al., 1993), where binding is increased after CREB phosphorylation. CBP also associates with the histone acetyltransferase p300/CBP-associated factor (P/CAF) (Ogryzko et al., 1996). These coactivators predominantly function through histone acetyltransferase activity.

The proximal promoter region of *CYP11B1* gene contains activation protein 1 (AP-1) and stimulatory protein 1 (Sp1) binding sites. In this report, we provide evidence for an essential cooperation between multiple SF-1 and CREB complexes to provide FUER enhancer activity that is then fac-

ilitated by the AP-1 complex in the proximal promoter region. We show that the FUER and proximal promoter region are sites for histone acetylation during transcriptional stimulation of *CYP11B1* in primary adrenal cells.

Materials and Methods

Chemicals. 8-Br-cAMP was obtained from Sigma-Aldrich (St Louis, MO).

Cell Culture. Y-1 mouse adrenal cells were obtained from American Type Culture Collection (Manassas, VA) and were maintained in nutrient mixture F-10 supplemented with 2.5% fetal bovine serum, 15% donor horse serum, 100 units/ml penicillin, and 100 μ g/ml streptomycin. C3H10T1/2 (10T1/2) cells were cultured in Dulbecco's modified Eagle's/F-12 medium containing 10% fetal bovine serum, 100 units/ml penicillin, and 100 μ g/ml streptomycin. HEK293 cells were purchased from American Type Culture Collection and were cultured in minimal essential medium (Eagle's) with 2 mM L-glutamine and Earle's balanced salt solution adjusted to contain 1.5 g/l sodium bicarbonate, 0.1 mM nonessential amino acids, 1.0 mM sodium pyruvate, 10% heat-inactivated horse serum, 100 units/ml penicillin, and 100 μ g/ml streptomycin. Primary rat adrenocortical cells were isolated and cultured as described previously (Brake and Jefcoate, 1995).

Plasmid Constructions and Cell Transfection. Mouse SF-1 (pBKMV-SF-1), DAX-1 (pBKMV-mDAX-1), and human DAX-1 (pBKMV-hDAX-1) expression vectors were provided by Larry J. Jameson (Northwestern University, Chicago, IL). Expression vectors for mutant SF-1 (pSF-1-S203A and pSF-1-S430A) were provided by Takashi Yazawa (University of Fukui, Fukui, Japan) (Yazawa et al., 2003). Expression vector for P/CAF pCI-FLAG-PCAF was provided by Yoshihiro Nakatani. Mouse CBP expression vector pRc/RSV-mCBP was provided by Richard H. Goodman (Oregon Health & Science University, Portland, OR). SRC-1 expression vector pSRC-1 was provided by Gary H. Perdew (The Pennsylvania State University, University Park, PA). pCMV-PKA was purchased from BD Biosciences Clontech (Palo Alto, CA). pCMV-PKA contains the gene encoding the catalytic subunit of PKA, which is driven by the human cytomegalovirus (CMV) promoter.

DNA mutations were made with the ExSite PCR-based site-directed mutagenesis kit (Stratagene, La Jolla, CA) according to the manufacturer's standard protocol, with the following sets of primers: 1) mutant SFa, 5'-tgtTTGAGCTGGTGATACAAGCA (forward), 5'-TGACGTGCAAGACAGCCAA (reverse); 2) mutant SFb, 5'-AAGGTCAGGTAACAT-TCTACT (forward), 5'-GTgtTTGGTTTCCTGCTGTGATCAC (reverse); 3) mutant SFc, 5'-AAACAAGGTAACATTCTACTTTAA (forward), 5'-GTCCTTGGTTTCCTGCTTGT (reverse); 4) mutant SFd, 5'-CGTTGACGTTAATGTTGATGT (forward), 5'-ACAAACAATGTCAATGTTAACGTGC (reverse); 5) mutant SFb and mutant SFc, 5'-AAa caC AGG TAA CAT TCT ACT TTA A (forward), 5'-GTgtTTGGTTTCCTGCTGTGATCAC (reverse); 6) mutant CRE1, 5'-CAACCTTGAGCTGTGATAC (forward), 5'-gtaTGCAGAAGCAGCCAAATGGTTC (reverse); 7) mutant CRE2, 5'-TTAATGTTGATGTCTCGAG (forward), 5'-tacCAACGACAAGGTCAATGTCA (reverse); 8) mutant CRE1 and mutant SFa, 5'-tgtTTGAGCTGGTGATACAAGCA (forward), 5'-TGgtaTGCAGAAGCAGCCAAATGGTT (reverse); 9) mutant SFd and mutant CRE2, 5'-CGTTGgtaTTAATGTTGATGTCTCGAGCT (forward), 5'-ACAAACAATGTCAATGTGTAACGTGC (reverse); 10) mutant AP-1 5'-GAGCACAGACTTGAGACCCAA (forward), 5'-AGGGTctCCCAGGGTGGTCCAGTGGGACGT (reverse); 11) mutant Sp1a, 5'-CGCCCCACCCCTAAGGTCCCA (forward), 5'-TGAGGttgGGGACGCACTGCGAAAGTCCA (reverse); and 12) mutant Sp1b, 5'-CGCCCCcaCCTAAGGTCCCACTTCTCCA (forward), 5'-TGAGGGCGGGGACGCACTGCGA (reverse). The small letters in these primer sequences show mutant sequences. Transient transfections of luciferase reporters were performed by electroporation as described previously (Zheng et al., 2003).

Electrophoretic Mobility Shift Assay (EMSA). CREB EMSA was carried out as described previously (Zheng et al., 2003). Y-1 nuclear extracts were prepared from either untreated or 1 mM 8-Br-cAMP-treated (6 h) Y-1 cells. Oligonucleotide probes were end-labeled by T4 polynucleotide kinase. Binding reactions were performed in 10 μ l of volume with 10 μ g of Y-1 nuclear extract and 20,000 cpm of labeled probe in specific binding buffer. SF-1 binding buffer contains 20 mM HEPES, pH 7.9, 0.2 mM EDTA, 75 mM KCl, 0.5 mM dithiothreitol, and 10% (v/v) glycerol. AP-1 binding buffer contains 20 mM HEPES, pH 7.5, 0.2 mM EDTA, 50 mM NaCl, 0.25 mM dithiothreitol, and 10% (v/v) glycerol. Sp1 binding buffer contains 20 mM HEPES, pH 7.9, 0.1 mM EDTA, 40 mM KCl, 4 mM MgCl₂, 1 mM dithiothreitol, and 10% (v/v) glycerol. The binding reactions were resolved on a 6% nondenaturing polyacrylamide gel at 220 V for 2.5 h at 4°C. After electrophoresis, DNA-protein complexes were analyzed with a PhosphorImager. For competition experiments, a 100-fold molar excess of unlabeled oligonucleotides or 3 μ l of anti-AP-1 antibodies (Geneka Biotechnology, Inc., Montreal, QC, Canada), anti-SF-1 antibody, or anti-Sp1 antibody (Biotechnology, Charlottesville, VA) was added to the nuclear extracts before addition of radiolabeled probe. Sequences of the oligonucleotides of SF-1 and CREB binding sites used in EMSA are shown in Fig. 1B. Sequences of other oligonucleotides used in EMSA are listed here: 1) consensus AP-1, 5'-CGCTTGATGAGTCAGCCG-GAA; 2) mutant AP-1, 5'-CGCTTGATGAccCAGCCGGA; 3) CYP1B1 AP-1, 5'-TGGACCACCCTGGGTCACCCTGA; 4) mutant CYP1B1 AP-1, 5'-TGGACCACCCTGGGagACCCTGA; 5) consensus Sp1, 5'-CCCTTGTTGGGGGGCGGGGCTAAGCTGCG; 6) mutant Sp1, 5'-CCCTTGTTGGGttgGGGGCTAAGCTGCG; 7) Sp1a, 5'-TCGCAGTGCCTCCCGCCCCCTCAC; 8) mutant Sp1a, 5'-TCGCAGTGCCTCCcCaCCTCAC; 9) Sp1b, 5'-CCTCACGC-CCCACCCTTAAGGT; and 10) mutant Sp1b, 5'-CCTCACGC-CCCcCaCCTAAGGT. The small letters in the sequences show mutant bases.

Western Immunoblotting. Thirty μ g/lane of total cellular protein was subjected to Western immunoblot analysis. Anti-CREB-1 antibody and anti-mouse SF-1 antibody were purchased from Geneka Biotechnology, Inc. and Upstate Biotechnology (Charlottesville, VA), respectively. Immune complexes were visualized using the enhanced chemiluminescence detection method (Amersham Biosciences UK, Ltd., Little Chalfont, Buckinghamshire, UK) according to the manufacturer's protocol.

Chromatin Immunoprecipitation Assay. ChIP assay was performed using the acetyl-histone H3 immunoprecipitation assay kit (Upstate Biotechnology) per the manufacturer's recommendations. Cells (1×10^6) were cross-linked by addition of 1% formaldehyde to the medium for 10 min. Cell pellets were resuspended in 200 μ l of SDS lysis buffer (1% SDS, 10 mM EDTA, and 50 mM Tris-HCl, pH 8.1), sonicated under conditions that reduced DNA length to between 200 and 400 base pairs, and debris was removed by centrifugation. The chromatin solution was diluted 10-fold in immunoprecipitation buffer (0.01% SDS, 1.1% Triton X-100, 1.2 mM EDTA, 16.7 mM Tris-HCl, pH 8.1, and 167 mM NaCl) and precleared for 30 min at 4°C with Salmon sperm DNA/protein A agarose-50% slurry. The chromatin solution was then incubated with 4 μ l of anti-acetyl-H3 antibody (1 μ g/1 μ l) overnight at 4°C, and immune complexes were collected with Salmon sperm DNA/protein A agarose slurry. After washes and elution, cross-links were reversed by heating at 65°C for 4 h, and DNA was recovered by phenol extraction and ethanol precipitation.

Specific sequences in the immunoprecipitates were amplified and quantitated by real-time PCR. Quantitative PCR was performed by monitoring in real time the increase in fluorescence of the SYBR Green dye on an ABI PRISM 7000 sequence detector System (Applied Biosystems, Foster City, CA). The primer sequences used include FUER primers targeting region -5233 to -5153 5'-GCAGGAAACCAAGGA-CAAGGT (forward), 5'-CGTGCCTGAGTCTTGTGCTT (reverse) and

proximal promoter region primers targeting region -142 to -83 5'-CCTGGGTCACCCTGAGCAC (forward), 5'-ACTGCGAAAGTCCACG-GATC (reverse).

Results

SF-1 Is Essential for the cAMP Activation of FUER.

In a previous report (Zheng et al., 2003), we showed that the cAMP regulation of *CYP1B1* was completely dependent on the 189-base pair FUER (Fig. 1A). The activity of this region is dependent on a CRE sequence at the 3' end (CRE2) as well as a 111-base pair upstream sequence (-5298 to -5188) that was inactive alone (Zheng et al., 2003). The FUER contains four SF-1 binding elements (SFa, SFb, SFc, and Sfd) and two CRE elements (CRE1 and CRE2) (Fig. 1A). SFa overlaps CRE1, and SFb overlaps SFc, whereas Sfd is just adjacent to the essential CRE2.

EMSAs with nuclear extracts prepared from Y-1 cells (Fig. 1, B-E) indicated SF-1 binding at each site. Each complex was consistently stimulated by 8-Br-cAMP treatment (2.7 ± 0.3 - and 2.3 ± 0.3 -fold in experiment 1 and 3.1 ± 0.4 -fold in experiment 2). SF-1 specificity was established at each element by complete removal of the complex after preincubation with an anti-SF-1 antibody. CREB binding to CRE1 was largely prevented by the binding of SF-1 to the overlapping SFa sequence. However, this CREB interaction dramatically increased when the SFa sequence was mutated (CRE1 and mSFa) (Fig. 1C). This weak CREB binding does not affect SF-1 binding, as evidenced by the lack of effect from either CRE1 or preincubation with anti-CREB antibody. The overlapping SFb and SFc sequences bind only a single SF-1 (Fig. 1D). When separate mutations were introduced in either SFb or SFc sequences, SF-1 preferentially binds the SFc element (a ratio of 3.5 ± 0.5 - and 3-fold in experiment 1 and 4-fold in experiment 2) (Fig. 1D). Binding of SF-1 and CREB to, respectively, the Sfd and CRE2 elements occurred independently, as evidenced by the effect of separate mutations (Fig. 1E).

The enhancer activity was quantified by transfection of reporter constructs formed by linkage of FUER to the 0.2-kb proximal promoter region of *CYP1B1*. Mutations were introduced into FUER to assess the functional contribution of each SF-1 regulatory element (Fig. 2A). The FUER contributed 3-fold more basal activity to the proximal promoter while further elevating cAMP-stimulation 27-fold. As previously reported, mutation of CRE2 removed all cAMP-stimulated activity and most basal FUER activity. The cAMP-induced activities are somewhat less sensitive to mutations at SF-1 binding sites. Thus, SFa, SFb, and SFc mutations did not affect cAMP-induced activities, whereas Sfd mutation adjacent to the key CRE2 element halved the induced activity. The single mutations each lowered basal activity (Fig. 2, A and B). The Sfd mutation removed all basal stimulation to the proximal promoter contributed by the FUER. It is interesting that although mutation of either SFb or SFc maintained SF-1 binding in this region (Fig. 1D), mutation of each element appreciably and equally lowered FUER activity, indicating that they were not functionally redundant. Mutation of CRE1 had no effect except when SFa was also mutated (data not shown). The greater effects of single mutation on basal activities suggest that the cooperative effects of SF-1 complexes at each site are needed under basal conditions.

Mutations of SF-1 elements in pairs were appreciably more effective than single mutations. It is noteworthy that the double mutation of SFd and the more effective central element SFc removed 89% of the cAMP-induced FUEER activity. The combined mutation of each of these four SF-1 binding

sites abolished nearly all basal and induced enhancer activity of FUEER.

Overall, these data showed the following key features of SF-1/CREB partnership: 1) FUEER activity requires both SF-1 and CREB; 2) SF-1 optimally occupies the SFd element

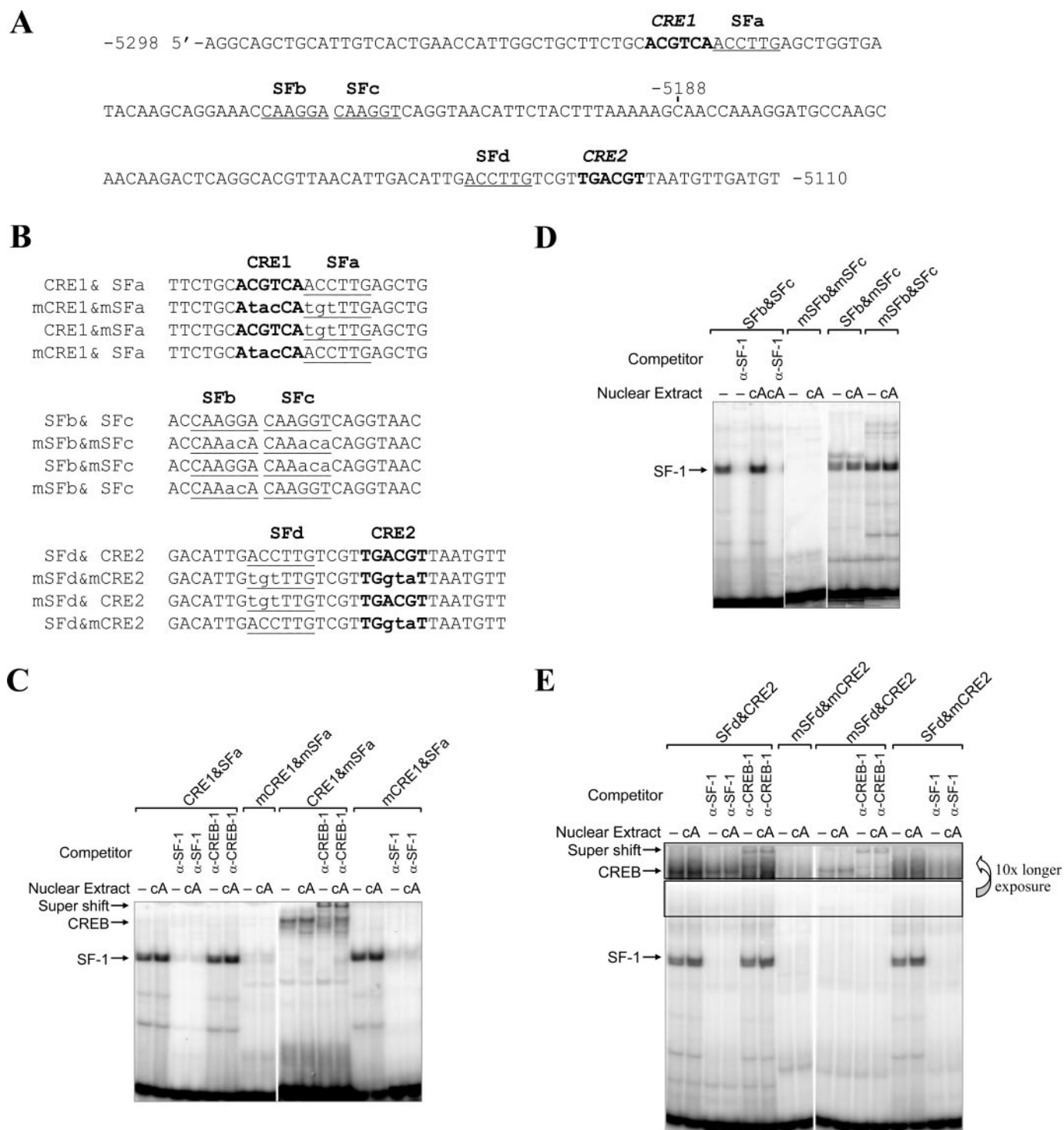


Fig. 1. A, sequence of FUEER. SF-1 binding elements (SFa, SFb, SFc, and SFd) are shown underlined and cAMP response elements (CRE1 and CRE2) are shown in bold. B, probes used in electrophoretic mobility shift assays. Mutant sequences are shown in lowercase. C to E, electrophoretic mobility shift assays of SFa and CRE1 (C), SFb and SFc (D), and SFd and CRE2 (E). Electrophoretic mobility shift assays were carried out with nuclear extracts from either untreated or 1 mM 8-Br-cAMP-treated (6-h) Y-1 cells. -, control; cA, 8-Br-cAMP-treated; α-CREB-1, anti-CREB-1 antibody; α-SF-1, anti-SF-1 antibody. EMSA data are shown from one of two independent experiments that provided similar cAMP-stimulated increase in SF-1 complexes.

adjacent to CRE2, but other SF-1 complexes at other SF-1 binding sites can also function as effective partners; and 3) multiple SF-1 complexes cooperate with CRE2 to give optimal activity.

DAX-1 Suppresses Basal and Induced FUER Activity. DAX-1 is a negative regulator of SF-1 function (Yu et al., 1998). To further test the involvement of SF-1 in FUER regulation, the FUER reporter was cotransfected with either a SF-1-expression vector or a DAX-1 expression vector (Fig. 3A). SF-1 increased basal activity and cAMP-stimulated activity similarly, whereas DAX-1 reduced both basal and cAMP-induced reporter activities by 3-fold (Fig. 3A). Equivalent results were obtained from the p7.0 *CYP1B1* reporter, although induction levels were lower. This anomalous result was repeated in three separate transfection experiments with similar results. p7.0 carries 7.0 kb of rat *CYP1B1* 5'-flanking sequence linked directly to a luciferase reporter gene (Zheng et al., 2003). These DAX suppressions were

greater than for mutation of any single SF-1 element, suggesting effects on multiple SF-1 complexes. The results further demonstrate that SF-1 is involved in FUER regulation of *CYP1B1* in Y-1 cells. The data also provide evidence that SF-1 contributes equally to basal and cAMP-induced FUER activities.

Cotransfection of the catalytic subunit of protein kinase A stimulated the FUER reporter. This stimulation required both the CRE sites and the SF-1 sites (Fig. 3B). Mutation of the full combination of SF-1 binding elements or the CRE2 element each completely inactivated PKA-induced activity. Likewise, mutation at CRE2 completely removed the SF-1-mediated activation. These findings establish that cAMP stimulation and SF-1 stimulation each require the contributions from both SF-1 and CREB in Y-1 cells. SF-1 contains several putative phosphorylation sites for different protein kinases (Zhang and Mellon, 1996; Carlone and Richards, 1997a; Jacob and Lund, 1998; Hammer et al., 1999). Muta-

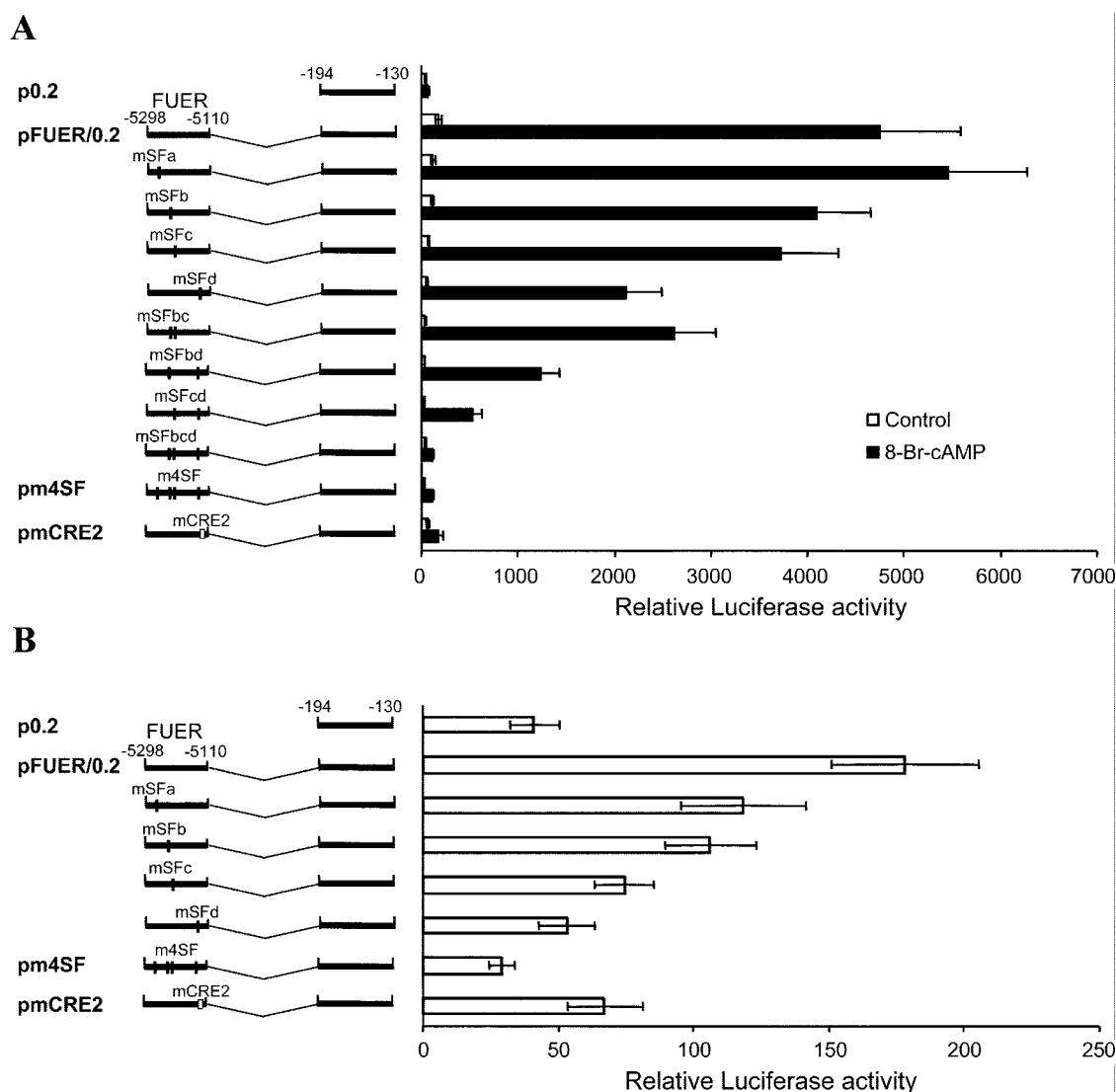


Fig. 2. A, SF-1 is essential for the cAMP activation of FUER in Y-1 cells. B, SF-1 elements and CRE2 mutations decreased basal activity of FUER in Y-1 cells. Twenty-four hours after transfection, cells were either untreated or treated with 1 mM 8-Br-cAMP for 12 h. mSFa, mSFb, mSFc, and mSFd, single SF-1 element mutations; mSFbc, mSFbd, and mSFcd, double mutations among SFb, SFc, and SFd; mSFbcd, mutations in all SFb, SFc, and SFd; m4SF, mutations in all four SF-1 elements; mCRE2, mutant CRE2. In this report, the average luciferase activity of p7.0 in untreated Y-1, 10T1/2, and HEK293 cells is assigned a value of 100 (Figs. 3–5). Results represent the means \pm S.D. from three separate experiments corrected in triplicate. We used the mean of three triplicate experiments.

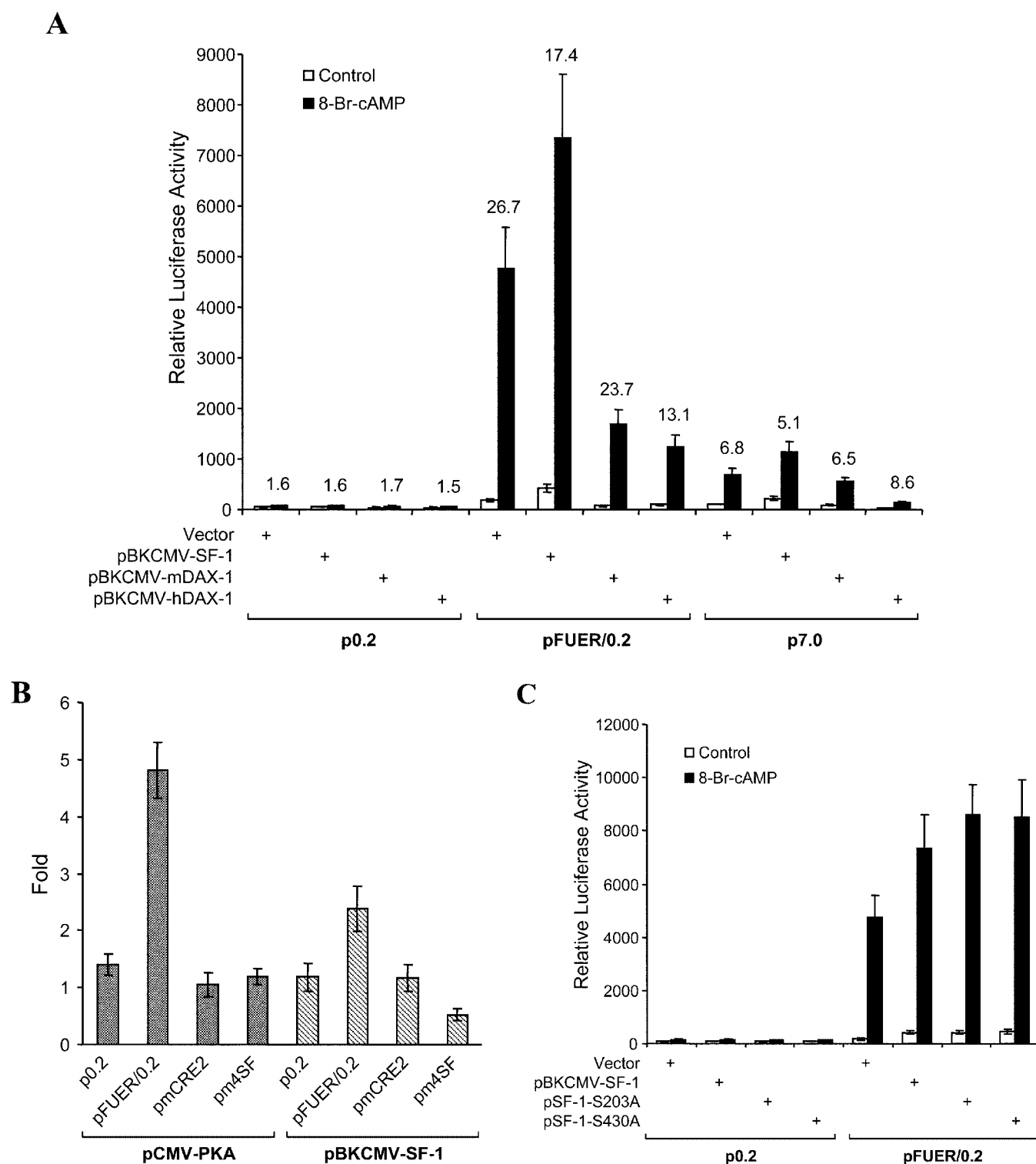


Fig. 3. A, effect of overexpression of SF-1 and DAX-1 on luciferase activities of *CYP1B1* reporters in Y-1 cells. p0.2 (4.8 μ g), pFUER/0.2 (5 μ g), or p7.0 (11.1 μ g) was cotransfected with 15 μ g of empty vector, SF-1 expression vector (pBKCMV-SF-1), mouse DAX-1 expression vector (pBKCMV-mDAX-1), or human DAX-1 expression vector (pBKCMV-hDAX-1). Numbers above columns show fold-induction by 8-Br-cAMP. B, FUER activity requires both SF-1 elements and CRE2. Five micrograms of each luciferase reporter was cotransfected with 15 μ g of PKA catalytic subunit expression vector (pCMV-PKA) or pBKCMV-SF-1. C, mutations of the PKA and MAPK phosphorylation sites on SF-1 had no effect on the SF-1-dependent FUER stimulation in Y-1 cells. Five micrograms of each luciferase reporter was cotransfected with 15 μ g of empty vector, wild or mutant SF-1 expression vectors. Twenty-four hours after transfection, cells were either untreated or treated with 1 mM 8-Br-cAMP for 12 h. Results represent the means \pm S.D. of an experiment performed with triplicate transfections of separate cultures. The differences between mouse DAX-1 and human DAX-1 were replicated in three experiments.

tions of the PKA phosphorylation site (Ser-430) and the MAPK phosphorylation site (Ser-203) on SF-1 had no effect on the SF-1-dependent FUR stimulation in Y-1 cells (Fig. 3C). These results indicate that SF-1 phosphorylation is not essential for the cAMP stimulation and the cooperation with CREB.

SF-1/CREB Cooperation Requires Additional Cell-Selective Factors. This SF-1/CREB interaction was further

supported with results from 10T1/2 cells that do not express SF-1 (Fig. 4A). CYP1B1 expression in 10T1/2 cells is regulated by AhR but not by cAMP (Zheng et al., 2003). Although the CRE tandem repeat reporter pCRE-luc responded 88-fold to 8-Br-cAMP (Zheng et al., 2003), 8-Br-cAMP failed to induce either the FUR reporter or a complete *CYP1B1* reporter (Fig. 4B). Introduction of exogenous SF-1 generated basal and cAMP-dependent FUR reporter activity in 10T1/2

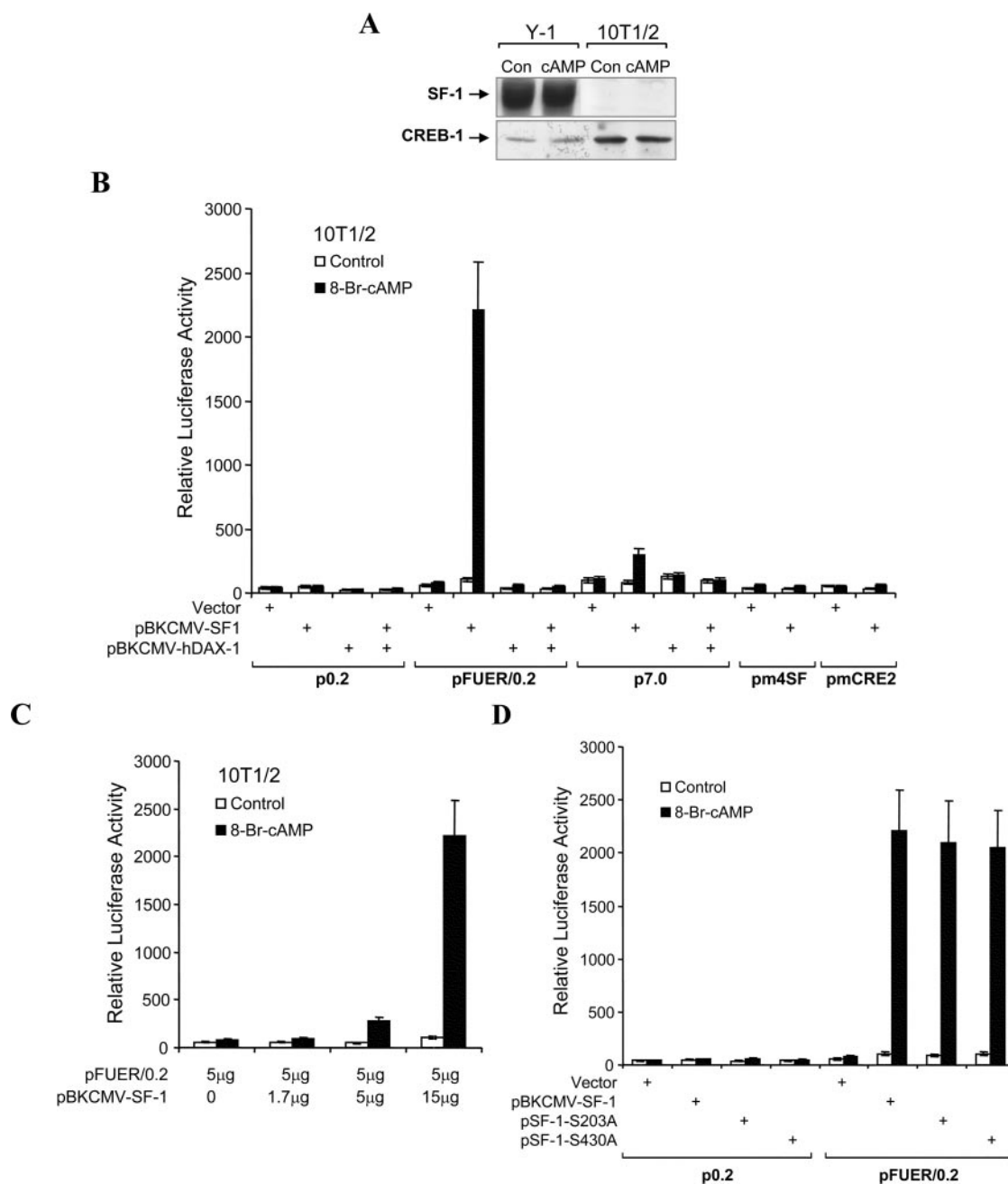


Fig. 4. SF-1 restores cAMP-stimulation of FUR activity to 10T1/2 cells. **A**, SF-1 and CREB-1 expressions in Y-1 and 10T1/2 cells. Western blotting was done with 30 μg of total cellular protein each lane. Cells were either untreated or treated with 1 mM 8-Br-cAMP for 6 h. **B**, exogenous SF-1 restores cAMP-dependent FUR reporter activity to 10T1/2 cells. Five micrograms of each luciferase reporter was cotransfected with 15 μg of empty vector or pBKMV-SF-1. pCRE-Luc carries luciferase gene with multiple copies of the CRE-binding sequence fused to HSV-TK-promoter. Twenty-four hours after transfection, cells were either untreated or treated with 1 mM 8-Br-cAMP for 4 h. **C**, dose-dependent effect of SF-1 on FUR activity in 10T1/2 cells. The FUR reporter (5 μg) was transfected with empty vector and increasing amounts of pBKMV-SF-1 from 0 to 15 μg. **D**, mutations of the PKA and MAPK phosphorylation sites on SF-1 had no effect on the SF-1-dependent FUR stimulation in 10T1/2 cells. Five micrograms of each luciferase reporter was cotransfected with 15 μg of empty vector, wild or mutant SF-1 expression vectors. Twenty-four hours after transfection, cells were either untreated or treated with 1 mM 8-Br-cAMP for 4 h. Luciferase results represent the means ± S.D. for triplicate transfections of separate cultures. Similar results were obtained from three experiments.

cells (Fig. 4B). This reconstitution was exponentially dependent on the level of SF-1 vector to realize full cAMP-stimulation (Fig. 4C). This 21-fold stimulation was again abrogated by mutation of either the four SF-1 target sequences or the CRE2 site and by cotransfection of the DAX-1 expression vector. DAX-1 produced an equally effective suppression of the p7.0 *CYP1B1* reporter. The data demonstrate that CREB and SF-1 can combine to confer cAMP-dependent responsiveness in 10T1/2 cells. Again, mutations of the PKA phosphorylation site (Ser-430) and the MAPK phosphorylation site (Ser-203) on SF-1 had no effect on the SF-1-dependent FUEER stimulation in 10T1/2 cells (Fig. 4D).

HEK293 cells have been extensively used for studies of transcription factors. They express CREB at a 10-fold greater level than Y-1 cells and also do not express SF-1 (Fig. 5A). pCRE-Luc exhibited high basal activity and a 3.5-fold cAMP-dependent activation (Fig. 5B). Cotransfection of SF-1 substantially suppressed the p0.2 proximal promoter. This suppression was prevented by linkage of the FUEER enhancer, but not the mutant FUEER, with mutations in all SF-1 binding sites (Fig. 5C). Unlike other FUEER activities, this effect did not depend on the CRE2 sequence. These effects of FUEER indicate interactions between SF-1 and the FUEER that overcome a 4-fold suppression effect of SF-1 on the proximal promoter. However, in spite of this response to SF-1 cotransfection and abundant CREB activity, the FUEER reporter failed to respond to cAMP in HEK293 cells. These results suggest that transcriptional factors other than CREB and SF-1 are also critical for FUEER induction by cAMP. These factors are present in Y-1 and 10T1/2 cells but not in HEK293 cells. This could be related to the suppression effect of SF-1 on the proximal promoters that are not seen in the other cells or to the lack of CREB/SF-1 cooperation.

AP-1 Is Required for Optimal cAMP Stimulation of FUEER Activity in Y-1 Cells. The proximal promoter region

may provide additional contributions to FUEER activity. Sequence analysis of the *CYP1B1* proxy promoter region identified a conserved potential AP-1 binding site (TGAG/CTCA) (Fig. 6A). AP-1 complexes, which are composed of either Fos-Jun or Jun-Jun dimers, have been shown to mediate cAMP-dependent responses in other genes (Duval et al., 1999). EMSA with oligonucleotide duplexes encompassing the AP-1 site (−149 to −129) demonstrated the existence of a specific protein-DNA complex that was increased 3-fold in Br-cAMP-treated Y-1 cells (Fig. 6B). The specificity of complex formation was confirmed by competition with the consensus AP-1 and the sensitivity to anti-c-Fos and c-Jun antibodies.

Mutation of AP-1 reduced basal activity 1.7-fold and cAMP induction 2.4-fold when the FUEER was linked to the proximal promoter (Fig. 6C) but did not affect the proximal promoter region activity. These results indicate that the effectiveness of the FUEER in part depends on interaction with the AP-1 complex. The cAMP-induction factor was changed by the mutation from 26.7- to 20.8-fold. AP-1 mutation decreased the PKA stimulation of the FUEER/0.2 reporter from 4.8- to 2.8-fold (Fig. 6D).

Two adjacent Sp1 binding sites of *CYP1B1* proximal promoter for the human gene are essential to basal activity (Wo et al., 1997). These Sp1 sites are highly conserved among human, rat, and mouse *CYP1B1* genes (Fig. 6A). Sp1 complexes at each site were formed with all Y-1 nuclear extracts and were also increased about 4.1-fold by 8-Br-cAMP treatment of the cells (Fig. 7A). Sp1 sites differed from AP-1 sites in that single or double mutations decreased p0.2 proximal promoter activity by 3- to 6-fold (Fig. 7B). Very similar decreases were seen for the 4.3-fold higher basal activity provided by linkage of FUEER to p0.2 (Fig. 7B). The decrease in cAMP-stimulated activity (2-fold) for the FUEER reporter was decreased less than the basal activity (3- to 4-fold) and again

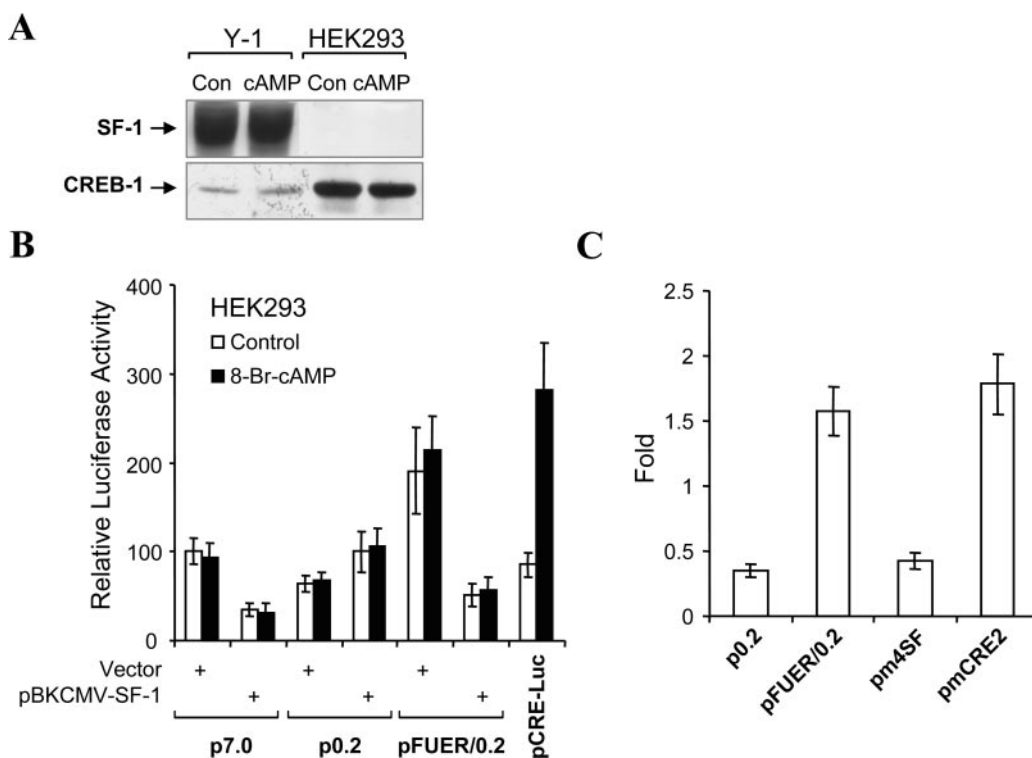


Fig. 5. SF-1 fails to restore cAMP-stimulation of FUEER activity to HEK293 cells. A, SF-1 and CREB-1 expressions in HEK293 cells. Western blotting was done with 30 μ g of total cellular protein each lane. Cells were either untreated or treated with 1 mM 8-Br-cAMP for 6 h. B, FUEER did not respond to cAMP in HEK293 cells even in the presence of SF-1 in cells. C, fold-induction of basal activity by cotransfection of SF-1 expression vector. Five micrograms of each luciferase reporter was cotransfected with 15 μ g of empty vector or pBKMV-SF-1. Twenty-four hours after transfection, cells were either untreated or treated with 1 mM 8-Br-cAMP for 6 h. Luciferase experiments were repeated with similar results at least three times.

A

AP-1

Rat -150 TGGACCACCCTGG**GTCA**CCCTGAGCAC--AGACTTGAGACCCAAGTCCCAGATCCGTGGACTTTC

Mouse -158 TGGACCACCCTGG**GTCA**C--TAAGCAC--GGATGTGAGACCCAAGTCCAGATCTGTGGATTTTC

Human -159 TAGAGCTCCG-AGGCCGGCCGGTGCCTGACGGGAG-TCCGG**GTCA**AAGCGGCCTGG-TGTGC

AP-1

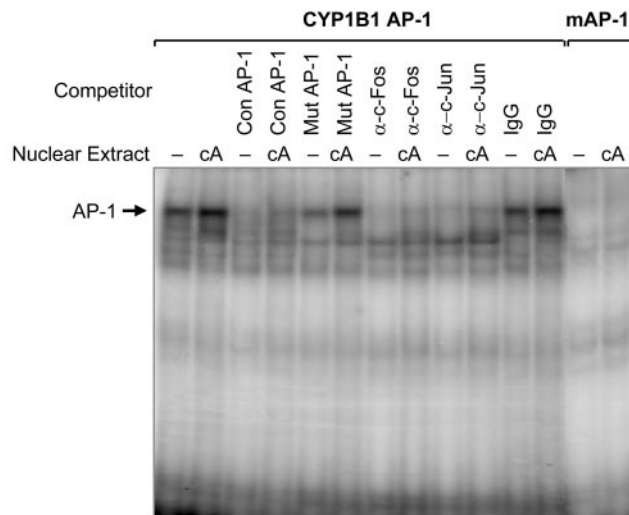
Sp1a **Sp1b** **TATA-like** **Box**

GCAGTGCGTCCCGCCCCCTACGCCCCACCCCTAAGGTCCCACCTTCCT-CCAGTCT-----TTAAAA -27

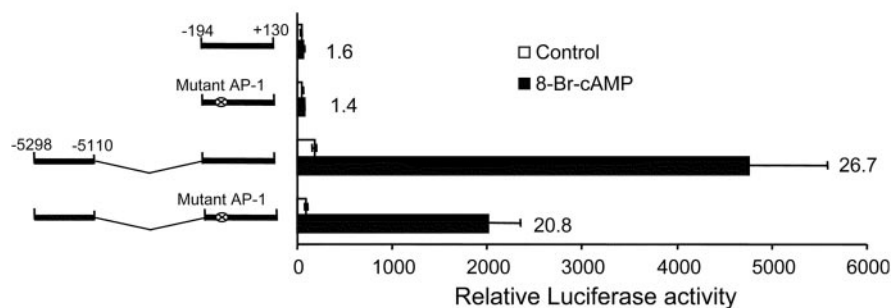
GCAGTCGGTCCCGCCCCCTACGCCCCACCCCTAAGGTCCCGCTTCCTCCAGTCTCTACCCAGTCCTTAAAA -26

GGCGCGCCCCGCCCCCGCAGGCCCGCCCTGCCAGGTGCGCGTGCCTCCTTCT--ACCCAGTCCTTAAAA -28

B



C



D

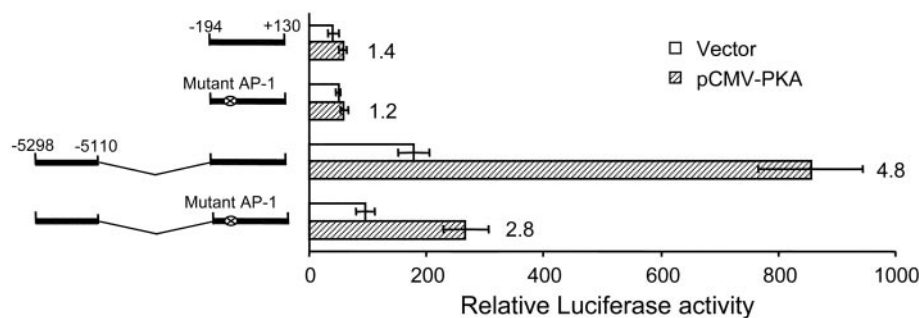


Fig. 6. A, alignment of proximal promoter sequences of rat, mouse and human *CYP1B1* genes. AP-1 elements are shown in bold. Sp1 elements are shown underlined. B, electrophoretic mobility shift assay of AP-1 element in proximal promoter region. Electrophoretic mobility shift assay was carried out with nuclear extracts from either untreated or 1 mM 8-Br-cAMP-treated (6-h) Y-1 cells. CYP1B1 AP-1, *CYP1B1* AP-1 oligonucleotide; mAP-1, mutant *CYP1B1* AP-1 oligonucleotide; Con AP-1, consensus AP-1 oligonucleotide; Mut AP-1, mutant AP-1 oligonucleotide. -, control; cA, 8-Br-cAMP treated. α -c-Fos, anti-c-Fos antibody; α -c-Jun, anti-c-Jun antibody. This is representative of one of two experiments with similar results. C, AP-1 element functioned dependently on FUEER. Numbers in right of columns show fold-induction by 8-Br-cAMP. D, mutation of the AP-1 element partially decreased PKA-mediated activity of FUEER. Five micrograms of each luciferase reporter was cotransfected with 15 μ g of empty vector or PKA catalytic subunit expression vector (pCMV-PKA). Numbers in right of columns show fold-induction by cotransfection of pCMV-PKA. C and D, 24 h after transfection, Y-1 cells were either untreated or treated with 1 mM 8-Br-cAMP for 12 h. Luciferase activity results represent the means \pm S.D. for three separate experiments performed in triplicate.

similarly by single or double mutations. The stimulation by PKA transfection was also less susceptible to the mutation (1.7-fold decrease) (Fig. 7C). These results suggest that activation of FUR by cAMP partially offsets the loss of Sp1 activity.

Coactivators CBP and SRC-1 Enhance cAMP Stimulation of *CYP1B1*. cAMP stimulation may be introduced through the binding selectivity and histone acetyl transferase activities of various coactivators. CBP is a coactivator

for both SF-1 (Monte et al., 1998) and CREB (Chrivia et al., 1993). The interaction of CREB with CBP is enhanced by CREB phosphorylation by PKA (Chrivia et al., 1993). CBP contributes to histone acetylation activity either directly (Bannister and Kouzarides, 1996; Ogryzko et al., 1996) or through the recruitment of other coactivators such as P/CAF (Blanco et al., 1998). SRC-1 interacts with AF2 domains, which are present in the C-terminal segment of many nuclear receptors, and also SF-1 (Ito et al., 1998). SRC-1 may

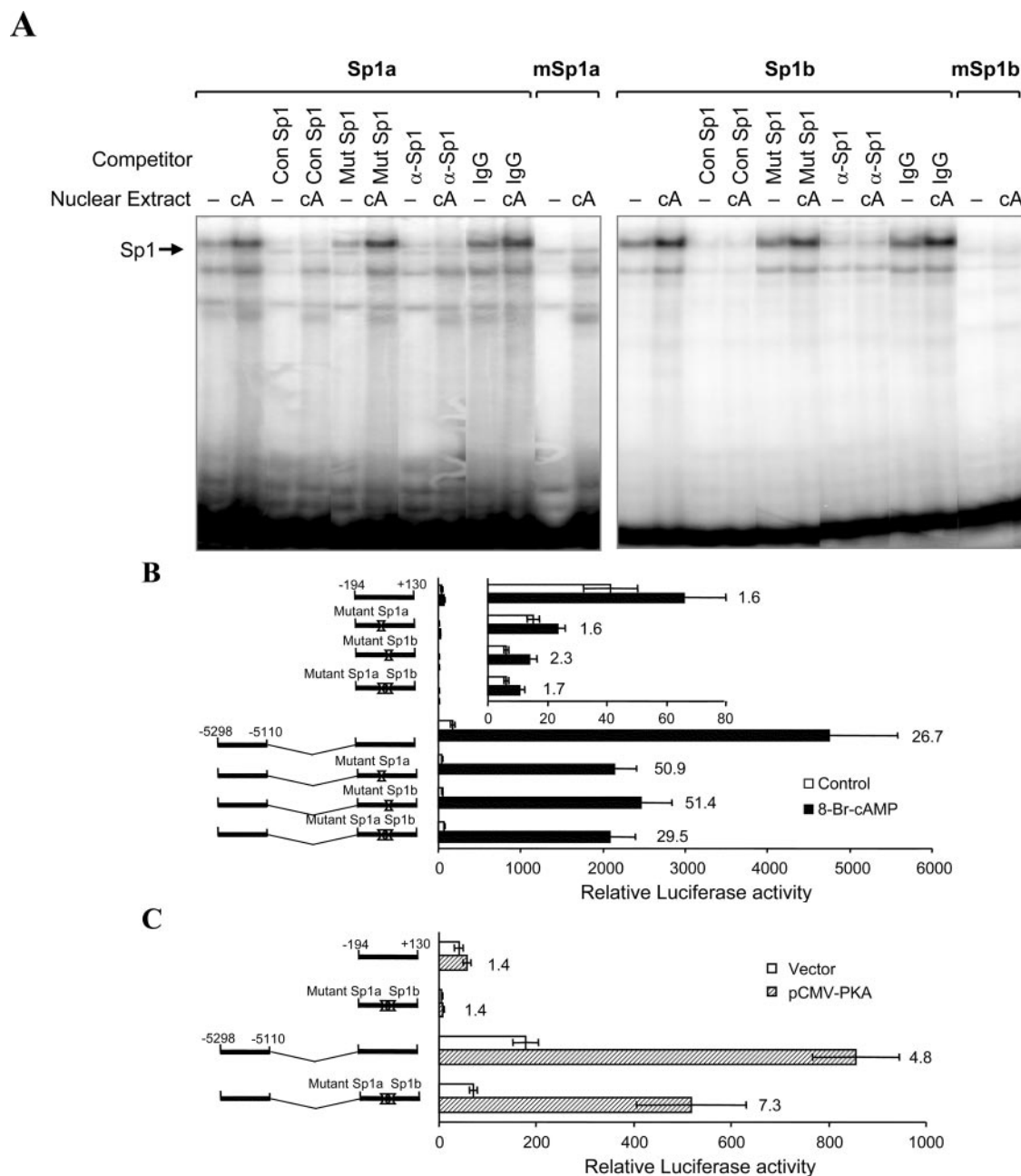


Fig. 7. A, electrophoretic mobility shift assay of Sp1 elements in proximal promoter region. Electrophoretic mobility shift assay was carried out with nuclear extracts from either untreated or 1 mM 8-Br-cAMP-treated (6-h) Y-1 cells. Sp1a, Sp1a oligonucleotide; mSp1a, mutant Sp1a oligonucleotide; Sp1b, Sp1b oligonucleotide; mSp1b, mutant Sp1b oligonucleotide; Con Sp1, consensus Sp1 oligonucleotide; Mut Sp1, mutant Sp1 oligonucleotide. —, control; cA, 8-Br-cAMP-treated. α -Sp1, anti-Sp1 antibody. This is representative of one of two experiments with similar results. B, Sp1 elements only affected basal activity of proximal promoter. Numbers in right of columns show fold-induction by 8-Br-cAMP. C, mutations of the Sp1 elements did not reduce PKA-mediated activity of FUR. Five micrograms of each luciferase reporter was cotransfected with 15 μ g of empty vector or PKA catalytic subunit expression vector (pCMV-PKA). Numbers in right of columns show fold-induction by cotransfection of pCMV-PKA. B and C, 24 h after transfection, Y-1 cells were either untreated or treated with 1 mM 8-Br-cAMP for 12 h. Luciferase activity results represent the means \pm S.D. for at least three separate experiments performed in triplicate.

therefore selectively generate activity through SF-1 rather than CREB.

To test the involvement of these coactivators, CBP, P/CAF, or SRC-1 expression vectors were cotransfected with p0.2 and pFUER/0.2 in Y-1 cells (Fig. 8). CBP did not affect basal FUER activity, but it increased the cAMP-induced FUER activity. Constitutive CBP is therefore a potential mediator for the cAMP stimulation of FUER. SRC-1 produced a much larger increase in both basal and cAMP-mediated induction. This suggests that SRC-1 participates differently from CBP with respect to FUER activity. P/CAF had little or no effect on basal and cAMP-mediated transcriptional activation of the FUER reporter.

cAMP Activation Involves Histone Acetylation. ChIP assays provide the means to assess the extent of histone acetylation in the FUER and proximal promoter regions. In primary rat adrenal cells, cAMP substantially induces the normal *CYP1B1* gene (Bhattacharyya et al., 1995; Brake and Jefcoate, 1995). Figure 9A shows that a 6-h cAMP stimulation of primary rat adrenal cells increases *CYP1B1* transcription while producing a similar increase in transfected FUER (Zheng et al., 2003). We pooled cells from 20 pairs of rat adrenals to provide sufficient cells for triplicate controls and cAMP-stimulate assays. We used two sets of PCR primers targeting FUER and the proximal promoter for quantification of the histone acetylation on nucleosomes (Fig. 9B). Antibodies directed against acetylated histone H3 were used for immunoprecipitation of transcriptionally active chromatin. ChIP assays demonstrated a 2.4- to 3.6-fold increase by 8-Br-cAMP of H3 histone acetylation in both FUER and proximal promoter regions in three separate experiments.

Discussion

In a previous report, we showed that cAMP effectively stimulated *CYP1B1* in adrenal cells through a 189-base pair

FUER located 5 kb from the transcriptional start site (Zheng et al., 2003). This enhancer functions remarkably in transmitting a very strong stimulus to a variety of basal promoters and in the extent of cAMP stimulation (27-fold). It is interesting that a similar grouping of three SF-1 elements and CREs is found in the proximal promoter of the StAR gene, which exhibits a parallel rapid cAMP response in rat adrenal cells and a similar developmental profile in the neonatal rat adrenal (Manna et al., 2003). Here, we have shown that this FUER activity is dependent on the interactions between multiple SF-1 binding sites and a single CRE. The synergy between SF-1 complexes is shown by the contributions from upstream and downstream halves of the FUER, each of which contains sites that form SF-1 complexes. Thus, FUER activity is provided optimally from a combination of complexes at three sites: a combined SFd/CRE2 with modest activity at the 3' end, and, respectively, a double SFb/SFc and an SFa/CRE1 site that function in a supplementary capacity in the upstream FUER. This multimeric involvement of SF-1 with a single CREB protein is seen in the StAR promoter and may therefore explain the similar regulation.

The FUER enhancer also produces 4.3-fold stimulation to proximal promoter activity in absence of cAMP. It is noteworthy that specific mutations of SF-1 elements singly and in combination indicate that cooperative interactions between these complexes contribute to both basal and cAMP-induced activities. Indeed, single SF-1 mutations produced more loss of basal activity, which is consistent with a need for all SF-1 complexes to adhere for optimal activity under basal conditions. Basal and induced FUER activities were also similarly inhibited by DAX-1, which is a negative regulator of SF-1 (Fig. 3A), and were similarly stimulated by the coactivator SRC-1, which interacts with the AF2 domain of SF-1 (Fig. 8) (Ito et al., 1998). We have previously shown that a CREB Ser/Ala-133 mutation, which prevents PKA phosphorylation,

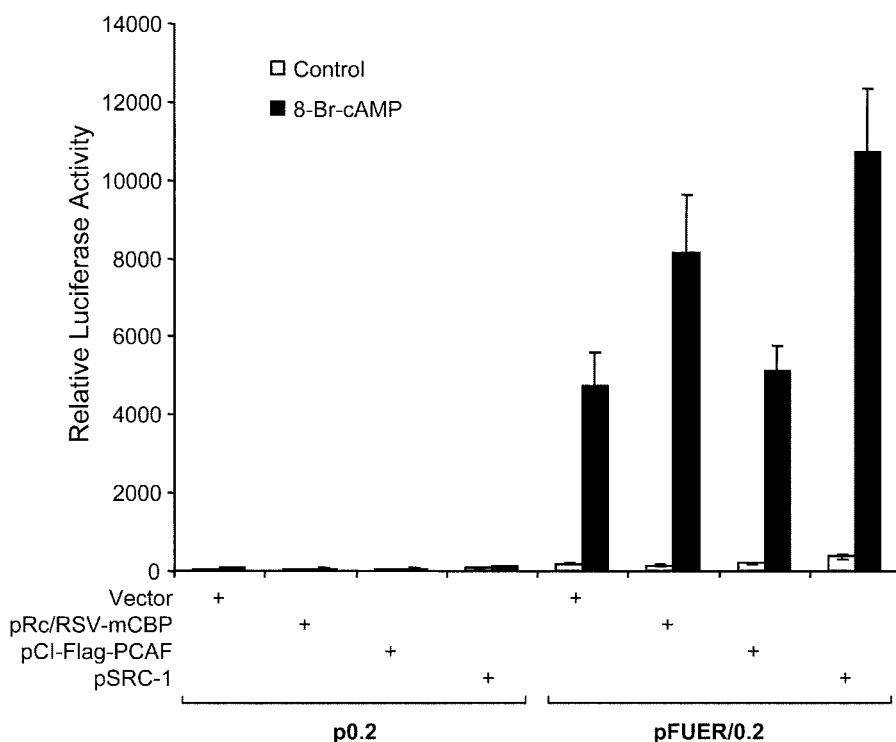


Fig. 8. Effect of coactivators CBP, P/CAF, and SRC-1 on FUER activity. FUER reporter (5 μ g) was cotransfected with 15 μ g of empty vector, CBP expression vector (pRc/RSV-mCBP), P/CAF expression vector (pCI-FLAG-PCAF), or SRC-1 expression vector (pSRC-1). Twenty-four hours after transfection, cells were either untreated or treated with 1 mM 8-Br-cAMP for 12 h. The experiment was performed three times with similar results.

inhibits FUR stimulation by cAMP (Zheng et al., 2003). SF-1 and CREB bind independently but in proximity at the 3' end. Evidence has been provided that SF-1 and CREB can form direct complexes (Ito et al., 2000). This is not apparent in the EMSA complexes for SFd/CRE2 where binding of SF-1 and CREB were independent.

SF-1 and CREB may function synergistically when recruiting additional coactivators such as CBP. As measured by the EMSA of nuclear extracts, cAMP produced small increases in the levels of SF-1 and CREB complexes, even though SF-1 and CREB levels did not increase in cells. Transfection of SF-1 increases FUR activity, indicating that nuclear levels of this protein in Y-1 cells are not optimal for FUR reporter activity. The cooperation of multiple SF-1 and CREB complexes within the FUR unit is therefore likely to amplify the effect of these increases to produce a more substantial effect. However, the activity of the basal SF-1/CREB is probably more substantially enhanced by the phosphorylation of CREB. The similar contribution of multiple SF-1 proteins to basal and cAMP-stimulated activities is also shared by StAR (Manna et al., 2003).

Interestingly we show that CBP selectively increases cAMP stimulation relative to basal activity. CBP interacts with phosphorylated Ser-133 CREB and also binds to components of the basal transcription machinery (Bisotto et al., 1996). CBP also interacts directly with multiple nuclear hormone receptors, potentially including SF-1 (Monte et al., 1998), and seems to serve as a bridge between CREB and the

transcriptional complex (Shaywitz and Greenberg, 1999). CBP may therefore serve as a signal integrator for these factors. CBP has inherent HAT activity and also recruits other proteins with HAT activity. This histone acetylation is associated with gene activation through alterations in chromatin structure (Struhl, 1998). The stimulation of histone H3 acetylation in the FUR and proximal promoter region of transcriptionally active *CYP11B1* supports the hypothesis that recruitment of CBP and other HAT enzymes opens up both regions in parallel after cAMP activation of the *CYP11B1* gene.

The FUR effects are transmitted to the transcription initiation complex through proximal AP-1 and Sp1 complexes and in parallel with activated histone acetylation during active cAMP-stimulated transcription of *CYP11B1* (Fig. 9B). Differences between basal and cAMP-induced regulation indicate different roles for these complexes. Recent work on the induction of *CYP11A1* via AhR shows transfer of enhancer components to the proximal promoter (Hestermann and Brown, 2003). AP-1 and Sp1 complexes in the proximal promoter region of *CYP11B1* exhibit different roles in the FUR mechanism. The AP-1 complex located immediately upstream of the Sp1. The two Sp1 complexes are critical for proximal promoter activity and for basal FUR activity. However, cAMP-stimulation of FUR partially overcomes the lack of Sp1 activity. AP-1 is not required for proximal promoter activity but contributes a 2-fold stimulation to both basal and induced FUR effects.

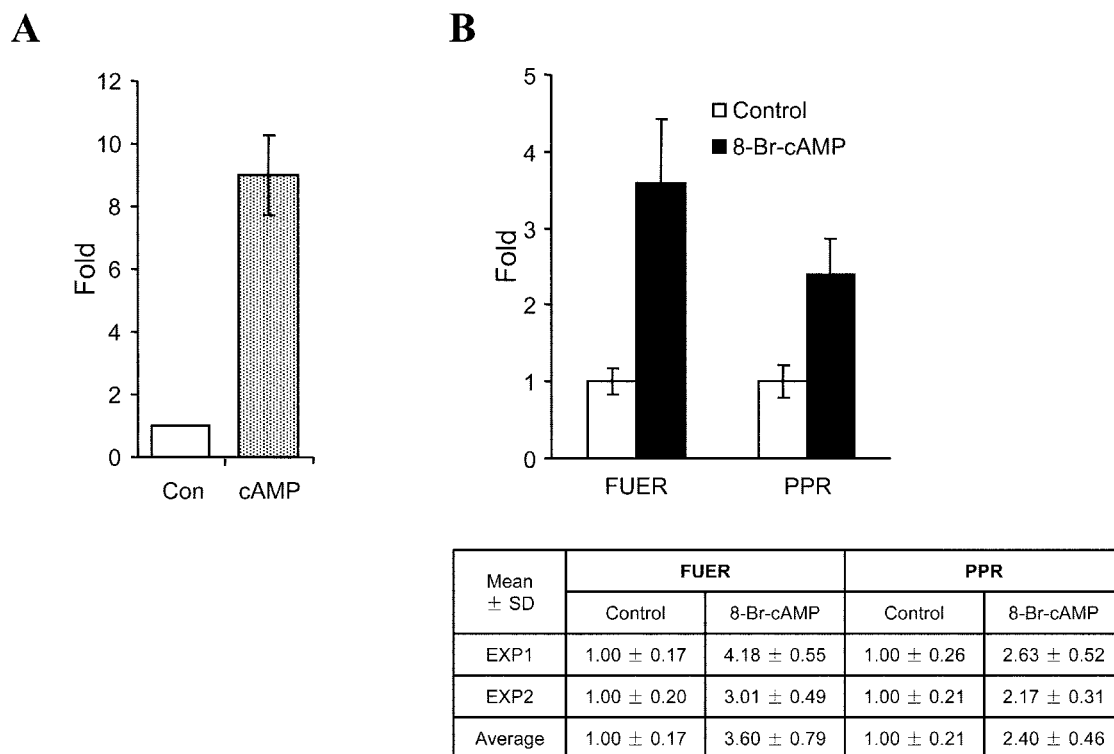


Fig. 9. A, *CYP11B1* mRNA expression in primary rat adrenocortical cells. Primary rat adrenocortical cells were prepared from 40 to 50 adrenal glands and cultured for 24 h. Cells were treated with 0.5 mM 8-Br-cAMP for 6 h. mRNA was isolated, separated, and hybridized as described previously (Zheng et al., 2003). B, cAMP induced acetylation of histone H3 in FUR and PPR regions. The chromatin immunoprecipitation assay was performed with primary rat adrenocortical cells untreated or treated with 1 mM 8-Br-cAMP for 6 h. Chromatin fragments were immunoprecipitated with anti-acetyl-histone H3 antibody, and FUR and PPR sequences were amplified and quantitated by real-time PCR using primers specific for FUR and PPR sequences. The bottom table shows the detailed ChIP assay data. Results represent the means ± S.D. for two separate experiments (EXP1, experiment 1; EXP2, experiment 2) performed in triplicate. Statistical measurements indicate statistically significant difference between the untreated and treated primary rat adrenocortical cells in ChIP assay (FUR, $p = 0.0104$; PPR, $p = 0.0052$).

This interaction between SF-1 and CREB has previously been reported for several cAMP-stimulated genes, including P450scc, which, like StAR, is presented in these same Y-1 cells (Monte et al., 1998; Manna et al., 2003). The interaction between SF-1 and CREB was first suggested by Parker and Schimmer (1995) for the cytochrome P450scc enzyme and has been observed with other genes associated with steroidogenesis (Carlone and Richards, 1997a). Ranging from additivity to synergy, a spectrum of interactions between SF-1 and CREB in modulation of promoter activity have been described previously (Ito et al., 2000). SF-1 is a key regulator of gonadal adrenal embryogenesis (Luo et al., 1994) and shows a pattern of expression generally specific to endocrine and neural tissues. The P450scc, like StAR and CYP1B1, shows very strong neonatal suppression in the rat, suggesting coordinate regulation by SF-1 and CREB during the period. The unusual SF-1/CREB coregulation of *CYP1B1* with key steroidogenic genes suggests a regulatory function in this organ.

We have also shown that SF-1 transfection introduces cAMP-dependent FUR activity into 10T1/2 cells (Fig. 4B), where *CYP1B1* is regulated through the AhR. Cotransfection of SF-1 expression vector did not restore the cAMP-response of FUR in HEK293 cells, even though these cells exhibit an appreciable basal effect of SF-1 on the FUR and express active CREB (Fig. 5). These cells also express SRC-1 (Castro et al., 1999) and CBP (Xu et al., 2001) and did not show increased activity after cotransfection of these coactivators (data not shown). This indicates that transcriptional factors or coactivators other than these factors and coactivators, which are present in Y-1 and 10T1/2 cells but not in HEK293 cells, also are critical for FUR induction by cAMP.

Several mechanisms of SF-1 and CREB interaction have been proposed, including direct interactions between CREB and SF-1, and recruitment of coactivators by the orphan nuclear receptor (Ito et al., 2000; Jacob et al., 2001). Another possibility is that the cAMP pathway leads to the phosphorylation of SF-1 and increases its transcriptional activity. Although SF-1 is also phosphorylated by PKA in vitro (Zhang and Mellon, 1996; Carlone and Richards, 1997b), recent studies suggest that phosphorylation on Ser 203 is mediated by the MAPK pathway (Hammer et al., 1999). The data presented here show that SF-1 phosphorylation is not a key part of its cooperation with CREB. Phosphorylation may however account for small increases in DNA binding that exceed changes in SF-1 levels. Phosphorylation of CREB at Ser-133 and recruitment of CBP may be sufficient to provide the FUR stimulation.

We have now shown that *CYP1B1* is regulated constitutively and after inductive stimulation through two rather similar enhancer regions that function in a cell-selective manner. It is also notable that similar regulation is achieved for StAR and *CYP1B1*, respectively, by conserved proximal interactions and by a remote unit. A regulatory advantage for the remote FUR is the possibility for separate cell-selective silencing commonly seen for alternative promoter that is found at similar distances, for example, in the cAMP regulation of aromatase in different cells (Shozu et al., 1998).

Acknowledgments

We thank Dr. Melissa Cimafranca and Alex Ko for editorial assistance.

References

- Bannister AJ and Kouzarides T (1996) The CBP co-activator is a histone acetyltransferase. *Nature (Lond)* **384**:641–643.
- Bhattacharyya KK, Brake PB, Eltom SE, Otto SA, and Jefcoate CR (1995) Identification of a rat adrenal cytochrome P450 active in polycyclic hydrocarbon metabolism as rat CYP1B1. Demonstration of a unique tissue-specific pattern of hormonal and aryl hydrocarbon receptor-linked regulation. *J Biol Chem* **270**:11595–11602.
- Bisotto S, Minorgan S, and Rehfuess RP (1996) Identification and characterization of a novel transcriptional activation domain in the CREB-binding protein. *J Biol Chem* **271**:17746–17750.
- Blanco JC, Minucci S, Lu J, Yang XJ, Walker KK, Chen H, Evans RM, Nakatani Y, and Ozato K (1998) The histone acetylase PCAF is a nuclear receptor coactivator. *Genes Dev* **12**:1638–1651.
- Brake PB and Jefcoate CR (1995) Regulation of cytochrome P4501B1 in cultured rat adrenocortical cells by cyclic adenosine 3',5'-monophosphate and 2,3,7,8-tetrachlorodibenzo-p-dioxin. *Endocrinology* **136**:5034–5041.
- Carlone DL and Richards JS (1997a) Evidence that functional interactions of CREB and SF-1 mediate hormone regulated expression of the aromatase gene in granulosa cells and constitutive expression in R2C cells. *J Steroid Biochem Mol Biol* **61**:223–231.
- Carlone DL and Richards JS (1997b) Functional interactions, phosphorylation and levels of 3',5'-cyclic adenosine monophosphate-regulatory element binding protein and steroidogenic factor-1 mediate hormone-regulated and constitutive expression of aromatase in gonadal cells. *Mol Endocrinol* **11**:292–304.
- Castro DS, Arvidsson M, Bondesson Bolin M, and Perlmann T (1999) Activity of the Nurr1 carboxyl-terminal domain depends on cell type and integrity of the activation function 2. *J Biol Chem* **274**:37483–37490.
- Chrivia JC, Kwok RP, Lamb N, Hagiwara M, Montminy MR, and Goodman RH (1993) Phosphorylated CREB binds specifically to the nuclear protein CBP. *Nature (Lond)* **365**:855–859.
- Doi J, Takemori H, Lin XZ, Horike N, Katoh Y, and Okamoto M (2002) Salt-inducible kinase represses cAMP-dependent protein kinase-mediated activation of human cholesterol side chain cleavage cytochrome P450 promoter through the CREB basic leucine zipper domain. *J Biol Chem* **277**:15629–15637.
- Duval DL, Ellsworth BS, and Clay CM (1999) Is gonadotrope expression of the gonadotropin releasing hormone receptor gene mediated by autocrine/paracrine stimulation of an activin response element? *Endocrinology* **140**:1949–1952.
- Fitzpatrick SL and Richards JS (1993) cis-Acting elements of the rat aromatase promoter required for cyclic adenosine 3',5'-monophosphate induction in ovarian granulosa cells and constitutive expression in R2C Leydig cells. *Mol Endocrinol* **7**:341–354.
- Hammer GD, Krylova I, Zhang Y, Darimont BD, Simpson K, Weigel NL, and Ingraham HA (1999) Phosphorylation of the nuclear receptor SF-1 modulates cofactor recruitment: integration of hormone signaling in reproduction and stress. *Mol Cell* **3**:521–526.
- Hestermann EV and Brown M (2003) Agonist and chemopreventative ligands induce differential transcriptional cofactor recruitment by aryl hydrocarbon receptor. *Mol Cell Biol* **23**:7920–7925.
- Honda S, Morohashi K, Nomura M, Takeya H, Kitajima M, and Omura T (1993) Ad4BP regulating steroidogenic P-450 gene is a member of steroid hormone receptor superfamily. *J Biol Chem* **268**:7494–7502.
- Ito M, Park Y, Weck J, Mayo KE, and Jameson JL (2000) Synergistic activation of the inhibin alpha-promoter by steroidogenic factor-1 and cyclic adenosine 3',5'-monophosphate. *Mol Endocrinol* **14**:66–81.
- Ito M, Yu RN, and Jameson JL (1998) Steroidogenic factor-1 contains a carboxy-terminal transcriptional activation domain that interacts with steroid receptor coactivator-1. *Mol Endocrinol* **12**:290–301.
- Jacob AL and Lund J (1998) Mutations in the activation function-2 core domain of steroidogenic factor-1 dominantly suppresses PKA-dependent transactivation of the bovine CYP17 gene. *J Biol Chem* **273**:13391–13394.
- Jacob AL, Lund J, Martinez P, and Hedin L (2001) Acetylation of steroidogenic factor 1 protein regulates its transcriptional activity and recruits the coactivator GCN5. *J Biol Chem* **276**:37659–37664.
- Lala DS, Rice DA, and Parker KL (1992) Steroidogenic factor I, a key regulator of steroidogenic enzyme expression, is the mouse homolog of fushi tarazu-factor I. *Mol Endocrinol* **6**:1249–1258.
- Luo X, Ikeda Y, and Parker KL (1994) A cell-specific nuclear receptor is essential for adrenal and gonadal development and sexual differentiation. *Cell* **77**:481–490.
- Manna PR, Eubank DW, Lalli E, Sassone-Corsi P, and Stocco DM (2003) Transcriptional regulation of the mouse steroidogenic acute regulatory protein gene by the cAMP response-element binding protein and steroidogenic factor 1. *J Mol Endocrinol* **30**:381–397.
- Meyer BK, Petrusis JR, and Perdew GH (2000) Aryl hydrocarbon (Ah) receptor levels are selectively modulated by hsp90-associated immunophilin homolog XAP2. *Cell Stress Chaperones* **5**:243–254.
- Monte D, DeWitte F, and Hum DW (1998) Regulation of the human P450scc gene by steroidogenic factor 1 is mediated by CBP/p300. *J Biol Chem* **273**:4585–4591.
- Murray GI, Taylor MC, McFadyen MC, McKay JA, Greenlee WF, Burke MD, and Melvin WT (1997) Tumor-specific expression of cytochrome P450 CYP1B1. *Cancer Res* **57**:3026–3031.
- Ogryzko VV, Schiltz RL, Russanova V, Howard BH, and Nakatani Y (1996) The transcriptional coactivators p300 and CBP are histone acetyltransferases. *Cell* **87**:953–959.
- Otto S, Bhattacharyya KK, and Jefcoate CR (1992) Polycyclic aromatic hydrocarbon metabolism in rat adrenal, ovary and testis microsomes is catalyzed by the same novel cytochrome P450 (P450RAP). *Endocrinology* **131**:3067–3076.
- Otto S, Marcus C, Pidgeon C, and Jefcoate C (1991) A novel adrenocorticotropin-inducible cytochrome P450 from rat adrenal microsomes catalyzes polycyclic aromatic hydrocarbon metabolism. *Endocrinology* **129**:970–982.
- Parker KL and Schimmer BP (1995) Transcriptional regulation of the genes encoding the cytochrome P-450 steroid hydroxylases. *Vitam Horm* **51**:339–370.

- Pottenger LH and Jefcoate CR (1990) Characterization of a novel cytochrome P450 from the transformable cell line, C3H/10T1/2. *Carcinogenesis* **11**:321–327.
- Shaywitz AJ and Greenberg ME (1999) CREB: a stimulus-induced transcription factor activated by a diverse array of extracellular signals. *Annu Rev Biochem* **68**:821–861.
- Shozu M, Zhao Y, Bulun SE, and Simpson ER (1998) Multiple splicing events involved in regulation of human aromatase expression by a novel promoter, I. 6. *Endocrinology* **139**:1610–1617.
- Struhl K (1998) Histone acetylation and transcriptional regulatory mechanisms. *Genes Dev* **12**:599–606.
- Wo YY, Stewart J, and Greenlee WF (1997) Functional analysis of the promoter for the human CYP1B1 gene. *J Biol Chem* **272**:26702–26707.
- Xu W, Chen H, Du K, Asahara H, Tini M, Emerson BM, Montminy M, and Evans RM (2001) A transcriptional switch mediated by cofactor methylation. *Science (Wash DC)* **294**:2507–2511.
- Yazawa T, Mizutani T, Yamada K, Kawata H, Sekiguchi T, Yoshino M, Kajitani T, Shou Z, and Miyamoto K (2003) Involvement of cyclic adenosine 5'-monophosphate response element-binding protein, steroidogenic factor 1 and Dax-1 in the regulation of gonadotropin-inducible ovarian transcription factor 1 gene expression by follicle-stimulating hormone in ovarian granulosa cells. *Endocrinology* **144**:1920–1930.
- Yu RN, Ito M, and Jameson JL (1998) The murine Dax-1 promoter is stimulated by

SF-1 (steroidogenic factor-1) and inhibited by COUP-TF (chicken ovalbumin upstream promoter-transcription factor) via a composite nuclear receptor-regulatory element. *Mol Endocrinol* **12**:1010–1022.

Zhang L, Savas U, Alexander DL, and Jefcoate CR (1998) Characterization of the mouse Cyp1B1 gene. Identification of an enhancer region that directs aryl hydrocarbon receptor-mediated constitutive and induced expression. *J Biol Chem* **273**:5174–5183.

Zhang P and Mellon SH (1996) The orphan nuclear receptor steroidogenic factor-1 regulates the cyclic adenosine 3',5'-monophosphate-mediated transcriptional activation of rat cytochrome P450c17 (17 α -hydroxylase/c17-20 lyase). *Mol Endocrinol* **10**:147–158.

Zheng W, Brake PB, Bhattacharyya KK, Zhang L, Zhao D, and Jefcoate CR (2003) Cell selective cAMP induction of rat CYP1B1 in adrenal and testis cells. Identification of a novel cAMP-responsive far upstream enhancer and a second Ah receptor-dependent mechanism. *Arch Biochem Biophys* **416**:53–67.

Address correspondence to: Dr. Colin R. Jefcoate, Department of Pharmacology, University of Wisconsin, 1300 University Ave., Madison, WI 53706. E-mail: jefcoate@wisc.edu
